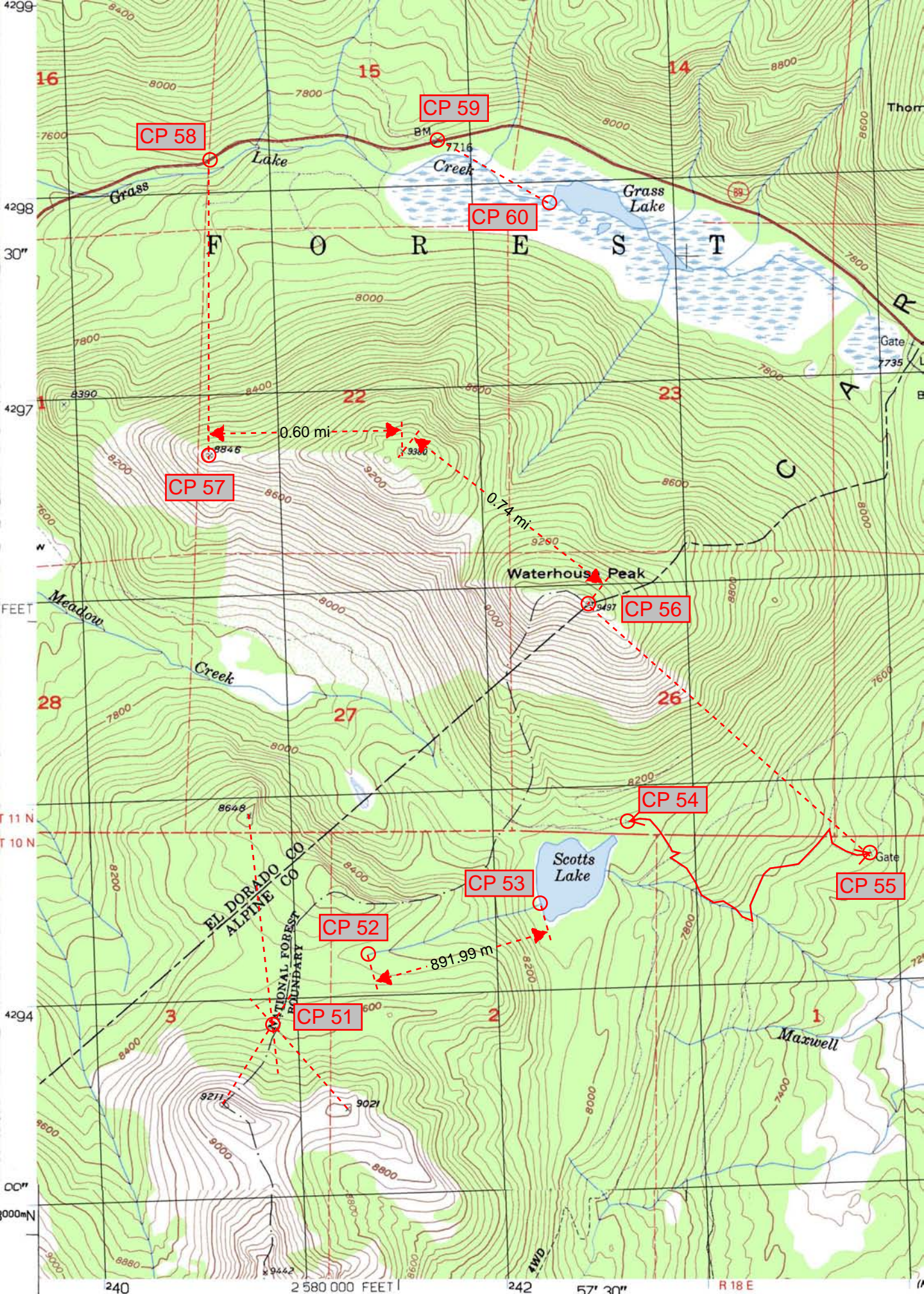


0.35 mi

## Challenge 6. – Hope Valley to Grass Lake.

Some challenging terrain on this cross country trip to Grass Lake. Prepare to get your feet wet in the marsh.

Check Point	Instruction	Question	Answer
<b>CP 51</b>	From the Peak marked 9211 Plot a bearing of 32° TN From the Peak marked 9021 Plot a bearing of 318° TN From the Peak marked 8648 Plot a bearing of 173.5° TN	What letter is at the intersection of this triangulation?	N
<b>CP 52</b>	From CP 51 find the top of the nearest stream that leads to Scotts Lake.	What is the UTM coordinate of the top of the stream?	0241360E 4294200N
<b>CP 53</b>	Follow the stream to Scotts Lake.	How many meters is it from the start of the stream to Scotts Lake?	892 meters
<b>CP 54</b>	Find the trail to the North of Scotts Lake and follow it East to the first trail intersection.	What is the UTM coordinate of this trail intersection?	0242670E 4294815N
<b>CP 55</b>	Find the shortest route by trail to the Gate in grid square 0243 4294	What is the distance in miles of the shortest route?	1.16 miles
<b>CP 56</b>	From the Gate travel directly to the top of Waterhouse Peak.	How much elevation did you gain on the climb to Waterhouse Peak?	2017 feet
<b>CP 57</b>	From Waterhouse Peak follow a bearing of 309.5° TN for 0.74 miles From that point follow a bearing of 269° TN for 0.6 miles.	What is the elevation at the final location?	8846 feet
<b>CP 58</b>	Travel True North until you reach Grass Lake Creek. Cross the creek and continue to the road.	At what elevation do you reach the road?	7600 feet
<b>CP 59</b>	Follow the road East to BM 7716	How many creeks did you cross?	2
<b>CP 60</b>	Plot UTM 0242375E 4297900N	What True North bearing would you follow from BM 7716 to find this CP?	119.5° TN
<b>Rest Stop</b>	<b>Go to <a href="http://www.ARNavSupplies.com">www.ARNavSupplies.com</a> and check your answers</b>		



CP 58

CP 59

CP 60

CP 57

CP 56

CP 52

CP 53

CP 54

CP 55

CP 51