

Challenge 11. – Rubicon Point to South Lake Tahoe.

The Magnetic declination at this location is 15° East. Pay careful attention to your plotting and measuring. This section requires accuracy.

Note: To calculate True North from Magnetic North on these maps: Take the Magnetic North Bearing and add the Declination.

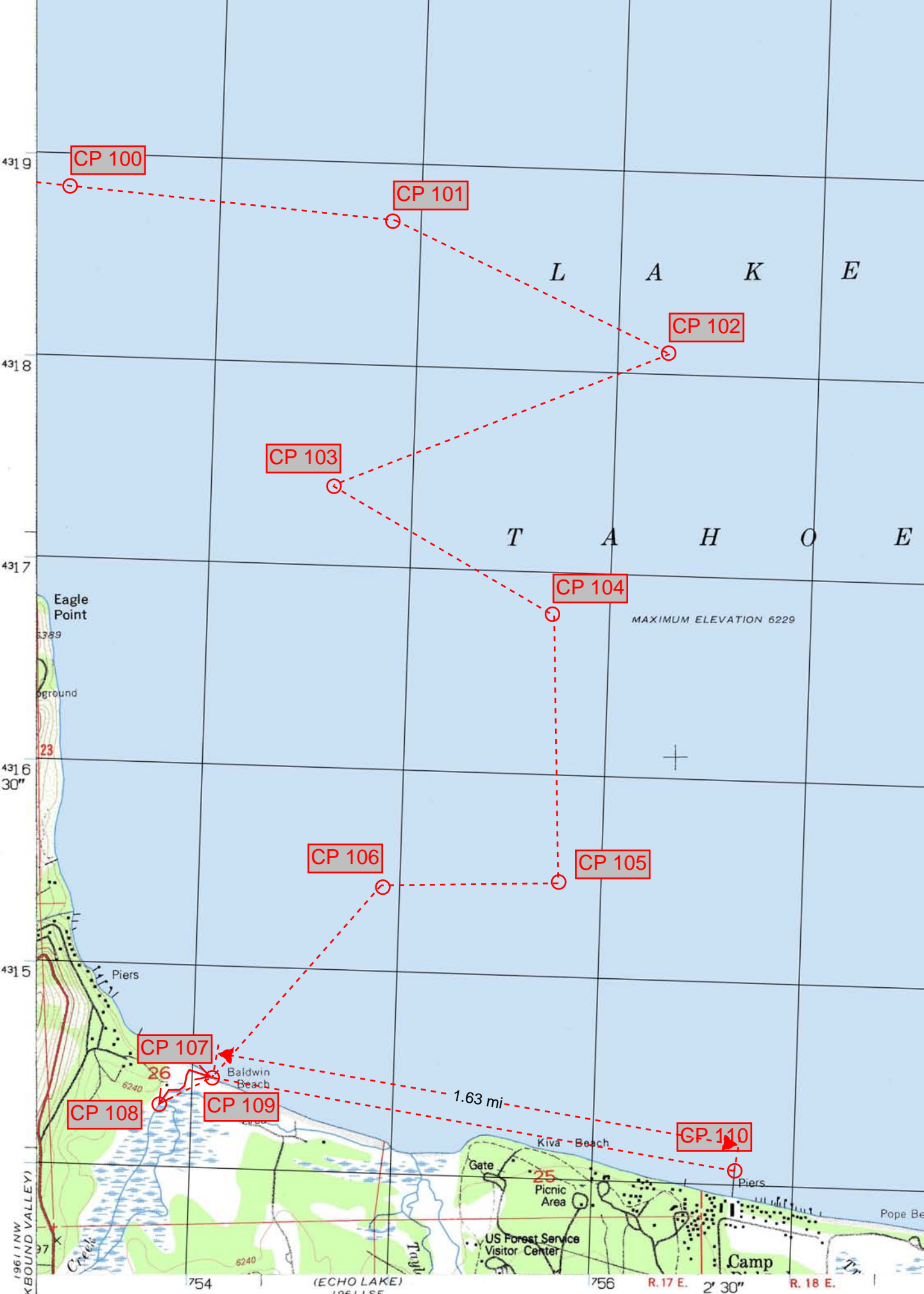
Check Point	Instruction	Question	Answer
CP 101	From CP 100 follow a bearing of 84° MN for 1 mile.	Give the UTM of this location.	0754900E 4318665N
CP 102	From CP 101 follow a bearing of 101° MN for 0.9 miles	Give the UTM of this location.	0756220E 4318075N
CP 103	From CP 102 follow a bearing of 235° MN for 1.1 miles	Give the UTM of this location.	0754580E 4317400N
CP 104	From CP 103 follow a bearing of 107° MN for 0.8 miles	Give the UTM of this location.	0755685E 4316755N
CP 105	From CP 104 follow a bearing of 165° MN for 0.8 miles	Give the UTM of this location.	0755730E 4315475N
CP 106	From CP 105 follow a bearing of 255° MN for 0.5 miles	Give the UTM of this location.	0754930E 4315445N
CP 107	From CP 106 follow a bearing of 207° MN until you reach the shore.	Give the UTM of this location.	0754095E 4314445N
CP 108	Your kayaks are too large to enter the creek so your team must run to the second creek intersection.	What is the distance in meters from the creek entrance to the second creek intersection?	372 meters
CP 109	Your team needs to return to the kayaks at CP 107.	What True North bearing would you follow to go directly back to the kayaks?	63° TN
CP 110	From the creek entrance follow a bearing of 85° Magnetic North.	What is the first thing that you arrive at when following this bearing?	The long Pier after 1.63 miles.
Final Push!	Go to www.ARNavSupplies.com and check your answers		

1.24 mi

Miles
0.89 mi

(PALOMARES)

101.24 m



CP 100

CP 101

CP 102

CP 103

CP 104

CP 106

CP 105

CP 107

CP 108

CP 109

CP 110

1.63 mi

LAKE

TAHOE

Eagle Point

Ground

Piers

26

Baldwin Beach

Kiva Beach

Gate

25

Picnic Area

US Forest Service
Visitor Center

Camp

Pope Be

1961 (NW
BOUND VALLEY)

754

(ECHO LAKE)
756

756

R. 17 E. 2' 30"

R. 18 E.